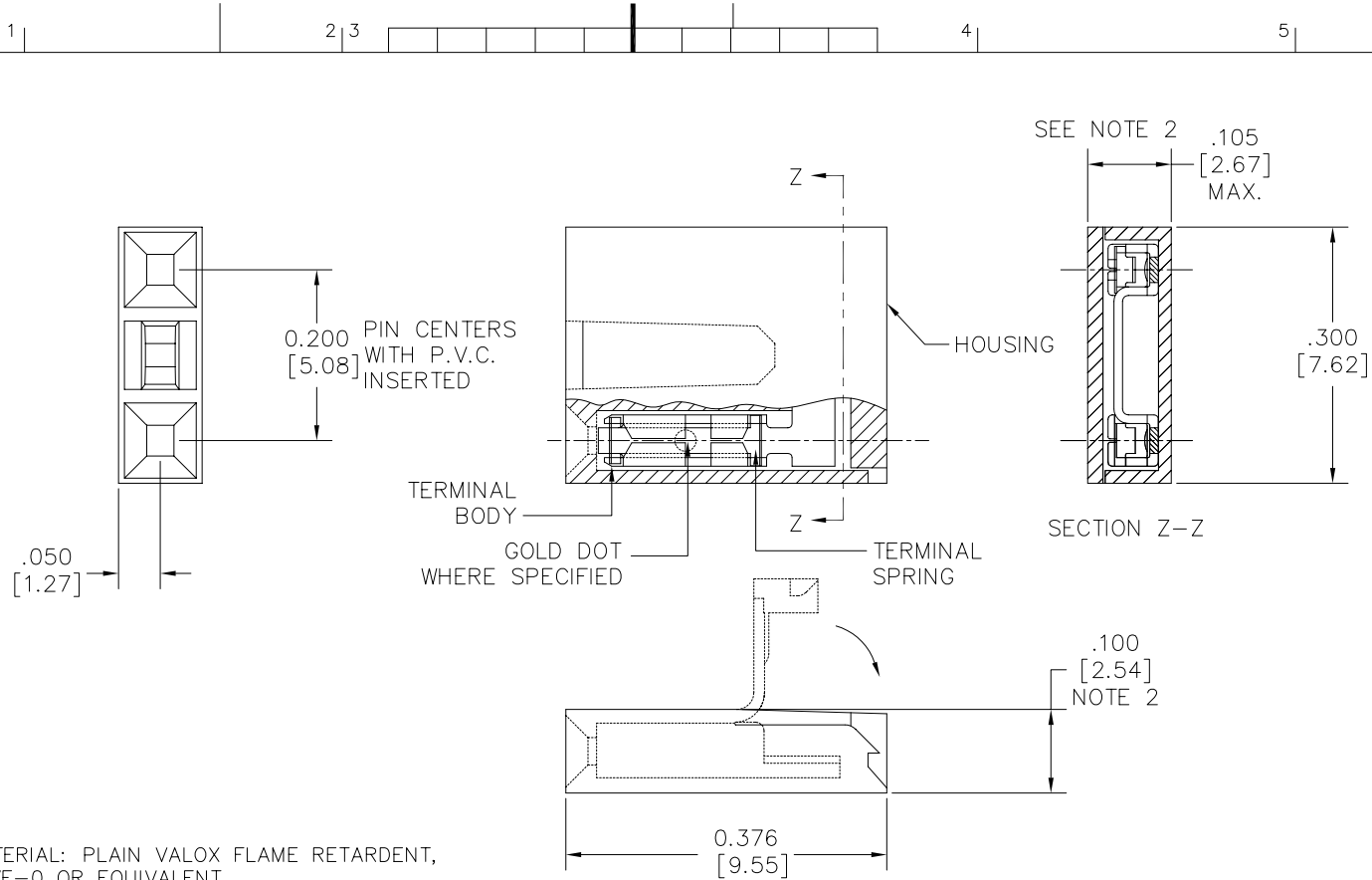


PRODUCT NO.
SEE SHT. 2



NOTES

- HOUSING MATERIAL: PLAIN VALOX FLAME RETARDENT, PER UL 94-VE-0 OR EQUIVALENT. COLOR BLACK
- $.100/2.54$ MAX. APPLIES TO HOUSING BODY. $.105/2.67$ MAX. APPLIES TO BODY AND LID, AFTER LID IS CLOSED PER TMS-258-88
- ADD 'LF' SUFFIX AT THE END OF PART NUMBERS FOR LEAD FREE OPTION.
- IF "LF" THE P/N THE PRODUCT MEETS EUROPEAN UNION DIRECTIVES AND OTHER COUNTRY REGULATION AS DESCRIBED IN GS-22-008.
- THE PRODUCT IS NOT INTENDED TO BE EXPOSED TO A MANUFACTURING SOLDER PROCESS.

mat'l. code		surface ISO 1302 ✓		tolerance ISO 406 ISO 1101		projection INCH/MM		product family JUMPER	
ltr		ecn no		date		tolerances unless otherwise specified		title	
F	M06-0187	MHT	5/15/06	angles	linear	.xx±.01/0.3	INCH/MM	MINI JUMP	
G	M07-0112	MHT	2/14/07	0'±2'		.xxx±.005/0.13	scale 10:1	CONNECTOR ASS'Y 200 cc	
						.xxxx±.0020/0.051		dwg no sheet 1 of 2 size	
				dr	J.W. BAIR	2/3/89	FCJ	65771 A3	
				enr	M.HAHN	2/3/89		type Product Customer Drawing	
				chr	M.HAHN	2/3/89			
sheet index	revision sheet	G	G						
		1	2						

Copyright FCJ
 FCJconnect.com

PRODUCT NO. NOTE 3	TERMINAL		TERMINAL SPRING	
	BODY MATERIAL	CONTACT PLATING	MATERIAL	PLATING
65771-001	.010/.025 THK. 1/4 HD. BRASS ALLOY UNS C26000	1.02μ/40μ" AU OVER 1.27μ/50μ" NICKEL	.122/.0048 THK BE-CU ALLOY	GOLD FLASH
65771-002		TIN LEAD	UNS C17200 HEAT TREATED	TIN PLATED
65771-003	—	—	—	—
65771-004	.010/.025 THK. 1/4 HD CU-NI ALLOY UNS C72500	.03/.001 MIN THK. GOLD DOT	.122/.0048 THK BE-CU ALLOY UNS C17200 HEAT TREATED	GOLD FLASH
65771-005	.25/.010 BRASS	.76μ/30μ" AU		GOLD FLASH

OBSOLETE

LEAD FREE OPTION

PRODUCT NO.	TERMINAL		TERMINAL SPRING	
	BODY MATERIAL	CONTACT PLATING	MATERIAL	PLATING
65771-001LF	.010/.025 THK. 1/4 HD. BRASS ALLOY UNS C26000	1.02μ/40μ" AU OVER 1.27μ/50μ" NICKEL	.122/.0048 THK BE-CU ALLOY	GOLD FLASH
65771-002LF		TIN	UNS C17200 HEAT TREATED	TIN PLATED
65771-004LF	.010/.025 THK. 1/4 HD CU-NI ALLOY UNS C72500	.03/.001 MIN THK. GOLD DOT	.122/.0048 THK BE-CU ALLOY UNS C17200 HEAT TREATED	GOLD FLASH
65771-005LF	.25/.010 BRASS	.76μ/30μ" AU		GOLD FLASH



FCIconnect.com

Copyright FCI

mat'l. code		surface ISO 1302 <input checked="" type="checkbox"/>	tolerance ISO 406 ISO 1101	projection 	product family JUMPER
ltr	ecn no	dr	date	tolerances unless otherwise specified	title
G				linear .xx±.01/0.3 angles .xxx±.005/0.13 0'±2' .xxxx±.0020/0.051	MINI JUMP CONNECTOR ASS'Y 200 cc
		dr	J.W. BAIR	2/3/89	scale 10:1
		enr	M.HAHN	2/3/89	FCI
		chr			dwg no 65771 sheet 2 of 2 size A3
		appd	M.HAHN	2/3/89	type Product Customer Drawing
sheet index	revision sheet				